

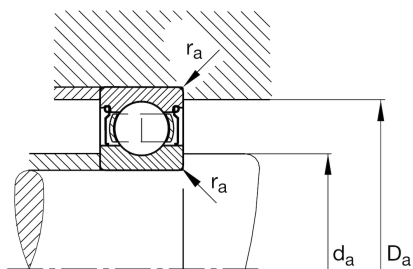
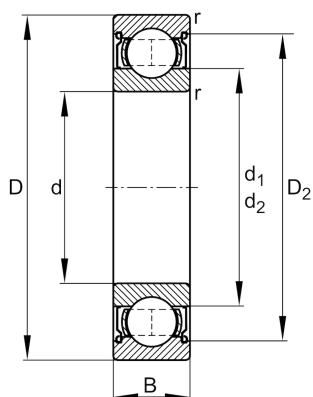
FAG

6011-2Z

Deep groove ball bearing

Schaeffler ID:
0167177830000Deep groove ball bearing 60...-2Z, single
row, shields, steel sheet metal cage

Technical information

**Dimensions**

r_{\min}	1.1 mm	Minimum chamfer dimension
D_2	81.5 mm	Caliber diameter outer ring
d_1	66.2 mm	Shoulder diameter inner ring
	0.385 kg	Weight

Main Dimensions & Performance Data

d	55 mm	Bore diameter
D	90 mm	Outside diameter
B	18 mm	Width
C_r	30,000 N	Basic dynamic load rating, radial
C_{0r}	21,200 N	Basic static load rating, radial
C_{ur}	1,150 N	Fatigue load limit, radial
n_G	9,100 1/min	Limiting speed
n_{gr}	8,300 1/min	Reference speed

Mounting dimensions

$d_{a\min}$	61 mm	Minimum diameter shaft shoulder
$D_{a\max}$	84 mm	Maximum diameter of housing shoulder
$r_{a\max}$	1 mm	Maximum fillet radius

Calculation factors

f_0	15.3	Calculation factor
-------	------	--------------------

Temperature range

T_{\min}	-20 °C	Operating temperature min.
T_{\max}	120 °C	Operating temperature max.